

Wintel BOX

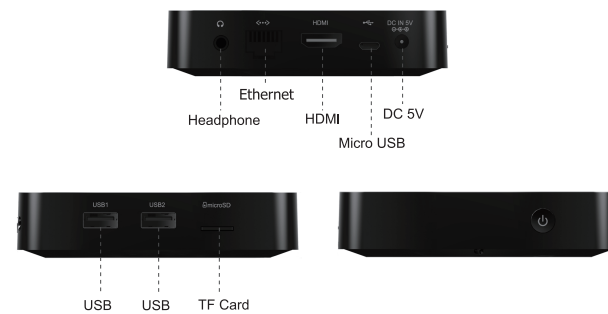


Quick Start Guide of Single OS

Thank you for using our product, please read the instruction manual before using.

1

1. Product picture



2

2.Attentions:

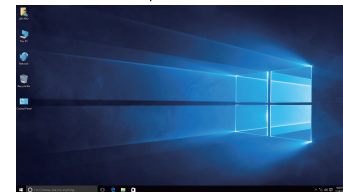
1. Please turn on/off the unit correctly, do not unplug the power adapter before power off.
2. Please do not change the BIOS settings, the unit may not work due to the change.
3. Please make sure your TV set TS on and plug in cable before pouner on the unit.

3.Power on/off

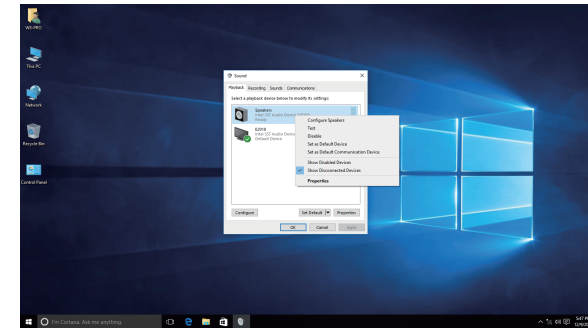
1. Press and hold the POWER key for 1 second, the LED light is on. and change color from red to blue, blue is under correct booting mode. Windows boot-up takes 30-60 seconds, press and hold Power key for 7 seconds to shut down.

4. Windows 10

1. Following the tips of Windows, input the name of the computer and the user to enter the system.
2. Right click the Sound icon to set sound up.



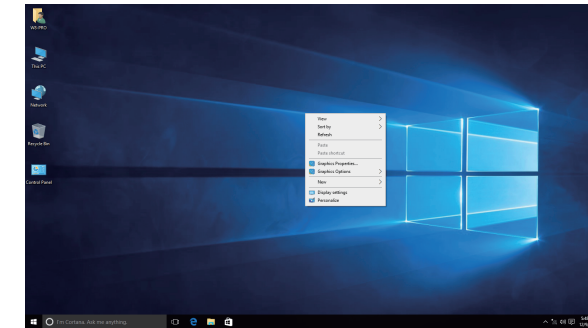
3



4

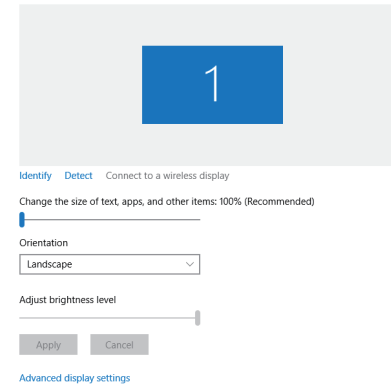
5.HDMI settings

On the desktop, right click and choose "Screen resolution" in the menu.



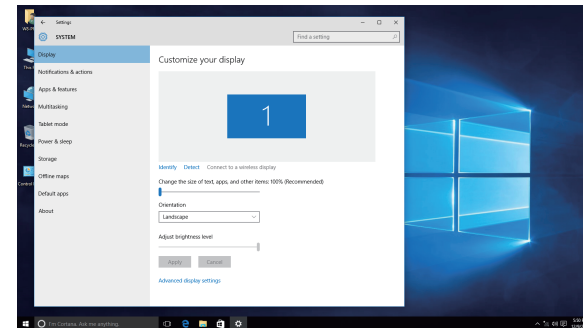
5

Choose a proper output definition in the red frame.



6

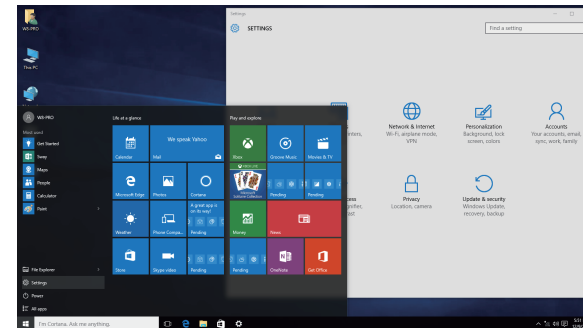
Click"apply"to finish the setting.



7

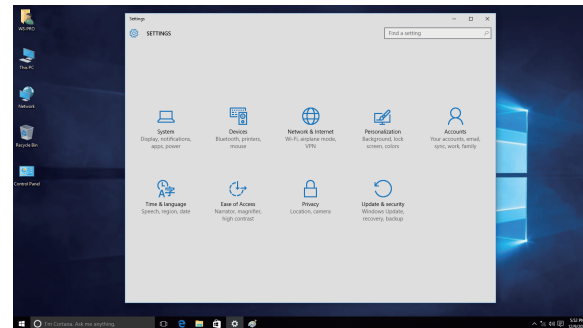
6.Recovery

- 1.Click "PC settings" icon on "Start" screen.



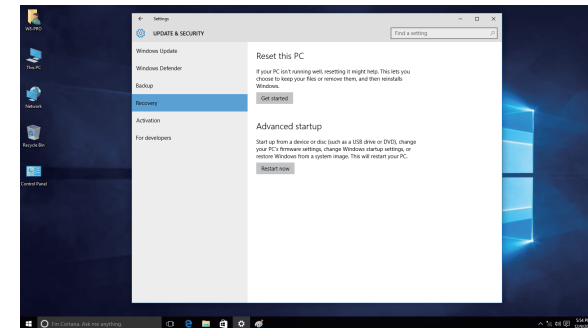
8

Go to "Update & recovery".



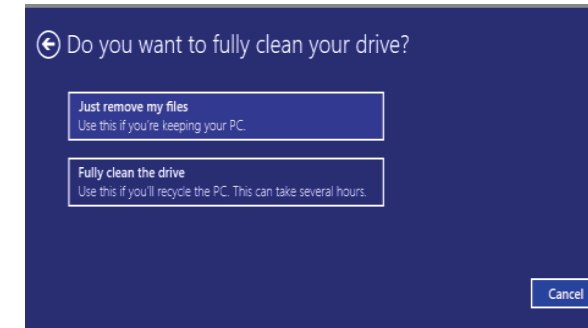
9

Choose "Recovery"and click "Get started", see the red frame.



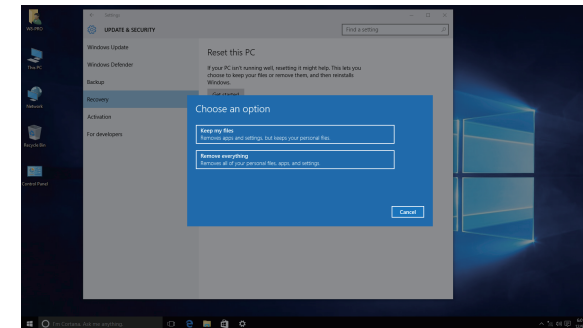
10

If you are sure that you want to reset your PC, click "Next".



11

Click "Just remove my files", the computer will restart and recover the system.



12